

DEPARTMENT OF INDUSTRIAL AND EMPLOYMENT RELATIONS

The DIER provides a service to companies and workers to promote a fair and fruitful employment relationship.

EMPLOYEES' RIGHTS

SATISFACTION

Diversity



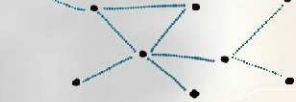
INNOVATION

STRATEGY VISION

SUCCESS

QUALITY VISION

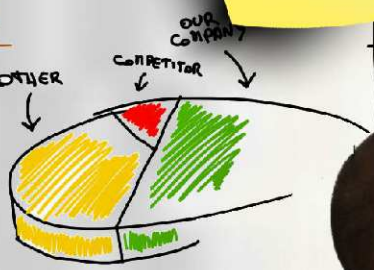
RESEARCH



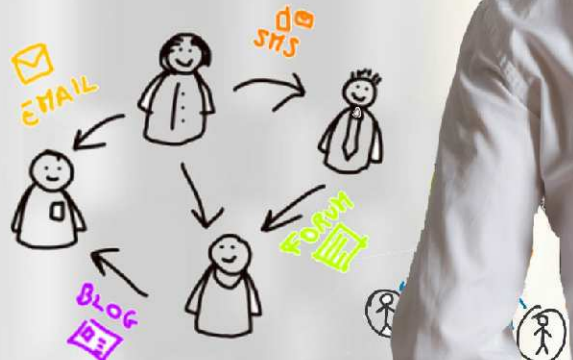
STATISTICS



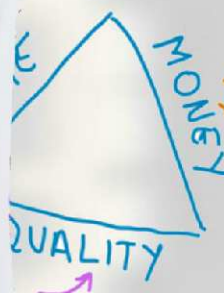
COMMUNICATION



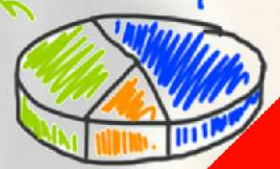
INFORM AND CONSULT



USE ALL COMMUNICATION



AVOID DISPUTES



Resource pack

Note about using this manual

The scope of this publication is to provide a quick reference for practitioners in the field of labour law. The manual is divided into two sections. The first section deals with minimum wages and the second deals with other minimum entitlements.

The rates of pay indicated in the minimum wages section refer to the minimum provided by the National Standard Order and by the relating Wage Regulation Order (WRO). The WROs regulate some employment conditions which also include the minimum rates of pay of employees who work in specific economic sectors. In cases where the manual refers to “next pages for detailed wages” is due to the fact that the relating WRO splits the minimum rates according to the category of employees and thus a detailed classification of wages is provided in the subsequent pages.

The manual is intended as a quick reference and must not replace references to the Employment and Industrial Relations Act (CAP 452) or the relevant WRO. For further assistance about conditions of employment kindly contact the:

Customer Care Section of the Department of Industrial and Employment Relations (DIER)

109 Melita Street, Valletta VLT 1121

Telephone: (+356)21224245/6

E-Mail: ind.emp.relations@gov.mt

Website: <https://dier.gov.mt>

The Opening Hours are:

Summer (16th June – 30th September) 0800hrs – 1200hrs

Winter (1st October – 15th June) 0800hrs – 1600hrs

Note about using this manual

MINIMUM WEEKLY WAGES FOR 2014

	16 years (weekly)	Hourly rate	17 years (weekly)	Hourly rate	18 years and over (weekly)	Hourly rate	Watchmen outdoors (weekly)	Watchmen indoors (weekly)	Part-Time Rates
National Minimum (in absence of an applicable WRO)	€156.06	€3.90	€158.90	€3.97	€165.68	€4.14	€165.68	€165.68	Pro rata
Agriculture & Allied Industries	€156.06	€3.90	€158.90	€3.97	€165.68	€4.14	€168.01	€165.68	Pro rata
Beverage Industries	See next pages for detailed wages								
Canning Industry	€156.06	€3.90	€158.90	€3.97	€165.68	€4.14	€165.68	€165.68	Pro rata
Cargo Clearance & Forwarding Agents' (Burdnara) Employees	<i>Employment of not less than 4 hrs on any one day -- equivalent of a day's work.</i>				€174.65	€4.37			Pro rata
Cinemas & Theatres	See next pages for detailed wages								
Clay & Glass Products	€156.06	€3.90	€158.90	€3.97	€165.68	€4.14	€165.68	€165.68	Pro rata
Construction	€156.95	€3.92	€159.53	€3.99	€170.34	€4.26	€172.67	€170.34	Pro rata
Domestic Service	See next pages for detailed wages								
Electronics Industry	€156.06	€3.90	€158.90	€3.97	€165.68	€4.14	€165.68	€165.68	Pro rata
Food Manufacture Industries	€158.39	€3.96	€160.56	€4.01	€165.68	€4.14	€168.01	€165.68	Pro rata
Hire (Cars or Private Buses)	See next pages for detailed wages								
Hospitals & Clinics	See next pages for detailed wages								
Hotels & Clubs	See next pages for detailed wages								
Jewellery & Watches	See next pages for detailed wages								
Laundries	€156.95	€3.92	€159.53	€3.99	€165.68	€4.14	€169.76	€165.68	Pro rata
Leather Goods & Shoes Industries	€156.06	€3.90	€158.90	€3.97	€165.68	€4.14	€168.01	€165.68	Pro rata

MINIMUM WEEKLY WAGES FOR 2014

	16 years (weekly)	Hourly rate	17 years (weekly)	Hourly rate	18 years and over (weekly)	Hourly rate	Watchmen outdoors (weekly)	Watchmen indoors (weekly)	Part-Time Rates
National Minimum (in absence of an applicable WRO)	€156.06	€3.90	€158.90	€3.97	€165.68	€4.14	€165.68	€165.68	Pro rata
Paper, Plastics, Chemicals & Petroleum	See next pages for detailed wages								
Printing & Publishing	€156.06	€3.90	€158.90	€3.97	€165.68	€4.14	€165.68	€165.68	Pro rata
Private Cleaning Services	€156.06	€3.90	€158.90	€3.97	€165.68	€4.14			Pro rata
Private Schools	See next pages for detailed wages								
Private Security Services									
-- Wardens	€197.41	€4.94	€197.41	€4.94	€197.41	€4.94			Pro rata
-- Other employees	€162.47	€4.06	€162.47	€4.06	€165.68	€4.14	(as per NSO)		Pro rata
Professional Offices	See next pages for detailed wages								
Public Transport	<i>for Employment of not less than four hours in any one day --equivalent of a day's work.</i>				€165.68	€3.45			Pro rata on 48 hrs
Seamen	See next pages for detailed wages								
Sextons & Custodians	€156.06	€3.90	€158.90	€3.97	€165.68	€4.14			Pro rata
Textiles & Allied Industries	€156.06	€4.14	€158.90	€4.14	€165.68	€4.14	€168.01	€165.68	Pro rata on minimum wage for 18 yrs and over
Tobacco Manufacture Industry	€156.06	€3.90	€158.90	€3.97	€165.68	€4.14	€168.01	€165.68	Pro rata
Transport Equip.,Metal & Allied Indus.	€157.53	€3.94	€159.86	€4.00	€166.85	€4.17	€166.85	€166.85	Pro rata
Travel & Insurance Agencies	See next pages for detailed wages								
Wholesale & Retail Trades	€156.95	€3.92	€159.53	€3.99	€166.85	€4.17	€169.17	€166.85	Pro rata
Woodworks	€156.06	€3.90	€158.90	€3.97	€165.68	€4.14	€168.01	€165.68	Pro rata

MINIMUM WEEKLY WAGES FOR 2014

	16 years (weekly)	Hourly rate	17 years (weekly)	Hourly rate	18 years and over (weekly)	Hourly rate	Watchmen outdoors (weekly)	Watchmen indoors (weekly)	Part-Time Rates
National Minimum (in absence of an applicable WRO)	€156.06	€3.90	€158.90	€3.97	€165.68	€4.14	€165.68	€165.68	Pro rata
Beverage Industries									

	Whole - time Employees		Part-time rates	
All categories				
At age 16 years	€156.95		€3.92	Pro rata
At age 17 years	€159.53		€3.99	Pro rata
At age 18 years	€165.68		€4.14	Pro rata
At age 20 years and over	€168.59 rising by annual increments of €0.58 per week up to €169.75		€4.21 up to €4.24	Pro rata
Watchmen	€168.59 rising by annual increments of €0.58 per week up to €169.75		€3.51 up to €3.54	Pro rata on 48 hrs

MINIMUM WEEKLY WAGES FOR 2014

	16 years (weekly)	Hourly rate	17 years (weekly)	Hourly rate	18 years and over (weekly)	Hourly rate	Watchmen outdoors (weekly)	Watchmen indoors (weekly)	Part-Time Rates
National Minimum (in absence of an applicable WRO)	€156.06	€3.90	€158.90	€3.97	€165.68	€4.14	€165.68	€165.68	Pro rata
CINEMAS AND THEATRES									

EMPLOYEES	Weekly	Hourly	Part-Time Rates
Projectionist	€170.34	€3.70	Pro rata on 46 hrs
Ass. Projectionist	€168.01	€3.65	Pro rata on 46 hrs
Staff Manager	€170.34	€3.70	Pro rata on 46 hrs
Barman	€168.01	€3.65	Pro rata on 46 hrs
Cashier	€168.01	€3.65	Pro rata on 46 hrs
Usher / Usherette	€168.01	€3.65	Pro rata on 46 hrs
Controller	€168.01	€3.65	Pro rata on 46 hrs
Learners			
<i>18 years and over</i>	€165.68	€3.60	Pro rata on 46 hrs
<i>17 years</i>	€158.90	€3.45	Pro rata on 46 hrs
<i>16 years</i>	€156.06	€3.39	Pro rata on 46 hrs
Other employees	€165.68	€3.60	Pro rata on 46 hrs

MINIMUM WEEKLY WAGES FOR 2014

	16 years (weekly)	Hourly rate	17 years (weekly)	Hourly rate	18 years and over (weekly)	Hourly rate	Watchmen outdoors (weekly)	Watchmen indoors (weekly)	Part-Time Rates
National Minimum (in absence of an applicable WRO)	€156.06	€3.90	€158.90	€3.97	€165.68	€4.14	€165.68	€165.68	Pro rata
DOMESTIC SERVICE									

All categories

Full - time

Group 1	€740.09	per month
Group 2	€735.43	per month
Group 3	€170.92	per week
Group 4	€169.17	per week

Part - time

Group 5 *	€28.20	per day --	when exceeding 4 hrs in any 1 day
Group 6 *	€4.23	per hr --	up to 4 hrs in any 1 day

MINIMUM WEEKLY WAGES FOR 2014

	16 years (weekly)	Hourly rate	17 years (weekly)	Hourly rate	18 years and over (weekly)	Hourly rate	Watchmen outdoors (weekly)	Watchmen indoors (weekly)	Part-Time Rates
National Minimum (in absence of an applicable WRO)	€156.06	€3.90	€158.90	€3.97	€165.68	€4.14	€165.68	€165.68	Pro rata
HIRE (CARS OR PRIVATE BUSES)									

Whole - time Employees	Weekly	Hourly
<i>Clerk / Receptionist</i>	€172.67	See note 1
<i>Drivers</i>	€172.09	See note 2
<i>Conductors / Attendants, other employees, excluding watchmen</i>		
aged 18 years and over	€168.34	See note 3 & 4
aged 16 or 17 years	€165.68	See note 3 & 4
<i>Watchmen</i>		
Indoors	€168.34	€3.51 (pro rata on 48 hrs)
Outdoors	€170.67	€3.56 (pro rata on 48 hrs)

Part - time Employees

Note 1: Clerk / Receptionist (pro rata on 42 hours)		
(i) for the first 3 hours or less in any day	€12.33	
(ii) for each hour or part thereof in excess of the first 3 hours in any one day	€4.11	per hour

Note 2: Drivers (pro rata on 46 hours)		
(i) for the first 3 hours or less in any day	€11.22	
(ii) for each hour or part thereof in excess of the first 3 hours in any one day	€3.74	per hour

Note 3: Conductors & Attendants (pro rata on 46 hours)		
	18 yrs	under 18 years
(i) for the first 4 hours or less in any day	€14.64	€14.40
(ii) for each hour or part thereof in excess of the first 4 hrs in any one day	€3.66	€3.60

Note 4: Other employees, excluding watchmen (pro rata on 46 hours)		
	18 yrs	under 18 years
(i) for the first 3 hours or less in any one day	€10.98	€10.80
(ii) for each hour or part thereof in excess of the first 3 hrs in any one day	€3.66	€3.60

MINIMUM WEEKLY WAGES FOR 2014

	16 years (weekly)	Hourly rate	17 years (weekly)	Hourly rate	18 years and over (weekly)	Hourly rate	Watchmen outdoors (weekly)	Watchmen indoors (weekly)	Part-Time Rates
National Minimum (in absence of an applicable WRO)	€156.06	€3.90	€158.90	€3.97	€165.68	€4.14	€165.68	€165.68	Pro rata
HOSPITALS AND CLINICS									
	Whole - time Employees						Part-time rates		
Category 'A'									
Hospital/Clinic Attendants	€8615.39 per annum rising by €55.90 per annum up to €8988.09						Pro rata		
Enrolled Nurse	€8878.61 per annum rising by €83.86 per annum up to €9893.93						Pro rata		
Staff Nurse/State Registered Nurse	€9363.12 per annum rising by €83.86 per annum up to €9713.36, and after €9713.36 per annum rising by €111.81 per annum up to €10407.14						Pro rata		
Category 'B'									
Hospital Auxiliaries									
<i>Servants & Laundry Employees</i>	€165.68 per week rising by annual increments of €1.16 per week up to €171.48						€4.14 up to €4.29	Pro rata	
<i>Fatiguelman/ Fatiguelwoman/ Labourers/ Caretakers/ Gatekeepers</i>	€168.59 per week rising by annual increments of €1.75 per week up to €173.84						€4.21 up to €4.35	Pro rata	
Semi - skilled Labourers	€173.25 per week rising by annual increments of €1.75 per week up to €178.50						€4.33 up to €4.46	Pro rata	
Skilled Workers	€175.58 per week rising by annual increments of €1.75 per week up to €183.73						€4.39 up to €4.59	Pro rata	
Non - Industrials (Clerk, Appt. Clerk, Clerk Typist)	€169.76 per week rising by annual increments of €1.75 per week up to €179.66						€4.24 up to €4.49	Pro rata	

MINIMUM WEEKLY WAGES FOR 2014

	16 years (weekly)	Hourly rate	17 years (weekly)	Hourly rate	18 years and over (weekly)	Hourly rate	Watchmen outdoors (weekly)	Watchmen indoors (weekly)	Part-Time Rates
National Minimum (in absence of an applicable WRO)	€156.06	€3.90	€158.90	€3.97	€165.68	€4.14	€165.68	€165.68	Pro rata

HOSPITALS AND CLINICS cont.

Category 'C'	Whole - time Employees	Part-time rates
Dental Auxiliaries		
1st year in profession under the age of 18 yrs	€165.68 per week	€4.14 Pro rata
After 1st year	€169.17 per week rising by annual increase of €1.28 per week up to €175.57	€4.23 up to €4.39 Pro rata
Dental Laboratory Assistant		
At age 16 years	€156.06	€3.90 Pro rata
At age 17	€158.93	€3.97 Pro rata
At age 18	€168.59 per week rising by annual increments of €1.75 per week up to €173.84	€4.21 up to €4.35 Pro rata
Dental Mechanics (with qualifications)	€9363.12 per annum rising by annual increments of €83.86 up to €9713.36 and after	Pro rata
	€9713.36 per annum rising by annual increments of €111.81 up to €10407.14	Pro rata
Dental Mechanics (without qualifications)	€175.58 per week rising by annual increase of €1.75 per week up to €181.99	€4.39 up to €4.55 Pro rata

MINIMUM WEEKLY WAGES FOR 2014

	16 years (weekly)	Hourly rate	17 years (weekly)	Hourly rate	18 years and over (weekly)	Hourly rate	Watchmen outdoors (weekly)	Watchmen indoors (weekly)	Part-Time Rates
National Minimum (in absence of an applicable WRO)	€156.06	€3.90	€158.90	€3.97	€165.68	€4.14	€165.68	€165.68	Pro rata
HOTELS AND CLUBS									
HOTELS									
	16 years (weekly)	Hourly rate	17 years (weekly)	Hourly rate	18 years and over (weekly)	Hourly rate			
Employer supplies a meal a day	€155.71	€3.89	€158.27	€3.96	€165.61	€4.14			Pro rata
Employer supplies two meals a day	€154.31	€3.86	€156.88	€3.92	€164.21	€4.11			Pro rata
Neither of the above applies	€156.95	€3.92	€159.51	€3.99	€166.85	€4.17			Pro rata
Rates irrespective of age		Weekly			Hourly				
Musicians		€183.78			€6.13				Pro rata on 30 hrs
Watchmen indoors		€166.85			€3.48				Pro rata on 48 hrs
Watchmen outdoors		€169.17			€3.52				Pro rata on 48 hrs
CLUBS									
	16 years (weekly)	Hourly rate	17 years (weekly)	Hourly rate	18 years and over (weekly)	Hourly rate	Watchmen outdoors (weekly)	Watchmen indoors (weekly)	
All employees	€156.95	€3.92	€159.53	€3.99	€165.68	€4.14	€168.01	€165.68	Pro rata
COFFEE SHOPS, BARS, RESTAURANTS									
Employees in:	16 years (weekly)	Hourly rate	17 years (weekly)	Hourly rate	18 years and over (weekly)	Hourly rate	Watchmen outdoors (weekly)	Watchmen indoors (weekly)	
Restaurants	€156.95	€3.92	€159.53	€3.99	€166.85	€4.17	€169.17	€166.85	Pro rata
Coffee shops and bars	€156.95	€3.92	€159.53	€3.99	€166.85	€4.17	€169.17	€166.85	Pro rata

MINIMUM WEEKLY WAGES FOR 2014

	16 years (weekly)	Hourly rate	17 years (weekly)	Hourly rate	18 years and over (weekly)	Hourly rate	Watchmen outdoors (weekly)	Watchmen indoors (weekly)	Part-Time Rates
National Minimum (in absence of an applicable WRO)	€156.06	€3.90	€158.90	€3.97	€165.68	€4.14	€165.68	€165.68	Pro rata
JEWELLERY AND WATCHES									
	Weekly		Hourly						
Employees other than watchmen									
18 Years and over									
During the first two years in employment	€165.68	€4.14							Pro rata
During the third year in empl.	€169.76	€4.24							Pro rata
During the fourth year in empl.	€172.09	€4.30							Pro rata
During the fifth year in empl.	€174.42	€4.36							Pro rata
16 years	€156.06	€3.90							Pro rata
17 years	€158.90	€3.97							Pro rata
Watchmen independently of their age									
Indoor duties	€165.68	€3.45							Pro rata on 48 hrs
Outdoor duties	€168.01	€3.50							Pro rata on 48 hrs

MINIMUM WEEKLY WAGES FOR 2014

	16 years (weekly)	Hourly rate	17 years (weekly)	Hourly rate	18 years and over (weekly)	Hourly rate	Watchmen outdoors (weekly)	Watchmen indoors (weekly)	Part-Time Rates
National Minimum (in absence of an applicable WRO)	€156.06	€3.90	€158.90	€3.97	€165.68	€4.14	€165.68	€165.68	Pro rata
PAPER, PLASTICS, CHEMICALS & PETROLEUM									
Skilled employees	Weekly		Hourly						
During the first year of employment	€168.01		€3.82		Pro rata on 44 hrs				
During the second and subsequent years in employment	€169.76		€3.86		Pro rata on 44 hrs				
Unskilled employees	F/T		P/T						
18 years or over	€165.68		€3.77		Pro rata on 44 hrs				
17 years	€158.90		€3.61		Pro rata on 44 hrs				
16 years	€156.06		€3.55		Pro rata on 44 hrs				
Watchmen	€169.76		€3.54		Pro rata on 48 hrs				

MINIMUM WEEKLY WAGES FOR 2014

	16 years (weekly)	Hourly rate	17 years (weekly)	Hourly rate	18 years and over (weekly)	Hourly rate	Watchmen outdoors (weekly)	Watchmen indoors (weekly)	Part-Time Rates
National Minimum (in absence of an applicable WRO)	€156.06	€3.90	€158.90	€3.97	€165.68	€4.14	€165.68	€165.68	Pro rata
PRIVATE SCHOOLS									

	Monthly	Hourly	
Teachers	€789.60	€6.75	Pro rata on 27 hrs
	Weekly	Hourly	
Employees other than maids employed in schools with full residential facilities to students	€170.92	€3.88	Pro rata on 44 hrs
Maids employed in schools with full residential facilities to students			
At age 16 years	€156.06	€3.55	Pro rata on 44 hrs
At age 17	€158.90	€3.61	Pro rata on 44 hrs
At age 18 years or over - first year	€165.68	€3.77	Pro rata on 44 hrs
-one year thereafter	€168.01	€3.82	Pro rata on 44 hrs
Watchmen			
Indoors	€165.68	€3.45	Pro rata on 48 hrs
Outdoors	€168.01	€3.50	Pro rata on 48 hrs

MINIMUM WEEKLY WAGES FOR 2014

	16 years (weekly)	Hourly rate	17 years (weekly)	Hourly rate	18 years and over (weekly)	Hourly rate	Watchmen outdoors (weekly)	Watchmen indoors (weekly)	Part-Time Rates
National Minimum (in absence of an applicable WRO)	€156.06	€3.90	€158.90	€3.97	€165.68	€4.14	€165.68	€165.68	Pro rata
PROFESSIONAL OFFICES									

	16 years		17 years		18 years and over		
	Weekly	Hourly	Weekly	Hourly	Weekly	Hourly	
CATEGORY 1 on engagement Watchmen	€156.06 See Note 1	€3.90 See Note 1	€158.90 See Note 1	€3.97 See Note 1	€165.68	€4.14 €3.45	Pro rata Pro rata on 48 hrs
CATEGORY 2 on engagement	€156.06 See Note 1	€3.90 See Note 1	€158.90 See Note 1	€3.97 See Note 1	€166.26	€4.16	Pro rata
CATEGORY 3 During the first, second and third year of employment in the category During the fourth and subsequent years of employment in the category	€156.06 See Note 1	€3.90 See Note 1	€158.90 See Note 1	€3.97 See Note 1	€167.43 €169.76	€4.19 €4.24	Pro rata Pro rata
CATEGORY 4 During the first, second and third year of employment in the category During the fourth and subsequent years of employment in the category	€156.06 See Note 1	€3.90 See Note 1	€158.90 See Note 1	€3.97 See Note 1	€168.59 €170.92	€4.21 €4.27	Pro rata Pro rata

Note 1: Since the minimum wage calculated according to the percentages provided in the Professional Offices Wages Council Wage Regulation Order falls below the National Minimum Wage, the national minimum rates apply accordingly.

MINIMUM WEEKLY WAGES FOR 2014

	16 years (weekly)	Hourly rate	17 years (weekly)	Hourly rate	18 years and over (weekly)	Hourly rate	Watchmen outdoors (weekly)	Watchmen indoors (weekly)	Part-Time Rates
National Minimum (in absence of an applicable WRO)	€156.06	€3.90	€158.90	€3.97	€165.68	€4.14	€165.68	€165.68	Pro rata
PROFESSIONAL OFFICES cont.									

	16 years		17 years		18 years and over		
	Weekly	Hourly	Weekly	Hourly	Weekly	Hourly	
CATEGORY 5							
During the first, second and third year of employment in the category	€156.06	€3.90	€158.90	€3.97	€172.09	€4.30	Pro rata
During the fourth and subsequent years of employment in the category	See Note 1	See Note 1	See Note 1	See Note 1	€174.42	€4.36	Pro rata
CATEGORY 6	See Note 1	See Note 1					
During the first year of employment in the category	€156.06	€3.90	€159.08	€3.98	€176.75	€4.42	Pro rata
During the second year of employment in the category			€163.26	€4.08	€181.40	€4.54	Pro rata
During the third and subsequent years of employment in the category					€186.16	€4.65	Pro rata

Note 1: Since the minimum wage calculated according to the percentages provided in the Professional Offices Wages Council Wage Regulation Order falls below the National Minimum Wage, the national minimum rates apply accordingly.

MINIMUM WEEKLY WAGES FOR 2014

	16 years (weekly)	Hourly rate	17 years (weekly)	Hourly rate	18 years and over (weekly)	Hourly rate	Watchmen outdoors (weekly)	Watchmen indoors (weekly)	Part-Time Rates
National Minimum (in absence of an applicable WRO)	€156.06	€3.90	€158.90	€3.97	€165.68	€4.14	€165.68	€165.68	Pro rata
SEAMEN									
	16 years		17 years		18 years and over				
	Weekly	Hourly	Weekly	Hourly	Weekly	Hourly			
CATEGORY A: Light duty tugs or lighters									
Coxswain	€169.76	€4.24	€170.93	€4.27	€172.09	€4.30			Pro rata
Engine Driver	€168.59	€4.21	€169.76	€4.24	€170.92	€4.27			Pro rata
Pumpman	€166.84	€4.17	€168.01	€4.20	€169.17	€4.23			Pro rata
Watchman	€164.52	€3.43	€165.69	€3.45	€166.85	€3.48			Pro rata on 48 hrs
Seaman or other calling	€166.26	€4.16	€167.43	€4.19	€168.59	€4.21			Pro rata
CATEGORY B: Heavy duty tugs									
Master	€177.91	€4.45	€179.08	€4.48	€180.24	€4.51			Pro rata
Engineer	€174.42	€4.36	€175.59	€4.39	€176.75	€4.42			Pro rata
Boatswain	€167.43	€4.19	€168.60	€4.22	€169.76	€4.24			Pro rata
Greaser	€167.43	€4.19	€168.60	€4.22	€169.76	€4.24			Pro rata
Watchman	€164.52	€3.43	€165.69	€3.45	€166.85	€3.48			Pro rata on 48 hrs
Seaman or other calling	€166.84	€4.17	€168.01	€4.20	€169.17	€4.23			Pro rata
CATEGORY C: Luzzus									
Master	€177.91	€4.45	€179.08	€4.48	€180.24	€4.51			Pro rata
Coxswain	€169.76	€4.24	€170.93	€4.27	€172.09	€4.30			Pro rata
Engineer	€174.42	€4.36	€175.59	€4.39	€176.75	€4.42			Pro rata
Engine Driver	€164.52	€4.11	€165.69	€4.14	€166.85	€4.17			Pro rata
Watchman	€168.59	€3.51	€169.76	€3.54	€170.92	€3.56			Pro rata on 48 hrs
Seamen or other calling	€166.26	€4.16	€167.43	€4.19	€168.59	€4.21			Pro rata

MINIMUM WEEKLY WAGES FOR 2014

	16 years (weekly)	Hourly rate	17 years (weekly)	Hourly rate	18 years and over (weekly)	Hourly rate	Watchmen outdoors (weekly)	Watchmen indoors (weekly)	Part-Time Rates
National Minimum (in absence of an applicable WRO)	€156.06	€3.90	€158.90	€3.97	€165.68	€4.14	€165.68	€165.68	Pro rata

SEAMEN cont.

	16 years		17 years		18 years and over		
	Weekly	Hourly	Weekly	Hourly	Weekly	Hourly	
CATEGORY D: Gozo ferry							
Captain	€187.74	€4.69	€188.91	€4.72	€190.07	€4.75	Pro rata
Coxswain	€172.09	€4.30	€173.26	€4.33	€174.42	€4.36	Pro rata
Boatswain	€169.76	€4.24	€170.93	€4.27	€172.09	€4.30	Pro rata
First Engineer	€181.45	€4.54	€182.62	€4.57	€183.78	€4.59	Pro rata
Second Engineer	€176.74	€4.42	€177.91	€4.45	€179.07	€4.48	Pro rata
Third Engineer/Engine Driver	€170.92	€4.27	€172.09	€4.30	€173.25	€4.33	Pro rata
Seamen /Deckhand	€166.26	€4.16	€167.43	€4.19	€168.59	€4.21	Pro rata
Watchman	€164.52	€3.43	€165.69	€3.45	€166.85	€3.48	Pro rata on 48 hrs
Other calling	€166.26	€4.16	€167.43	€4.19	€168.59	€4.21	Pro rata

CATEGORY E: Yachts, Pleasure Boats, etc.

Skipper/Captain	€179.07	€4.48	€180.24	€4.51	€181.40	€4.54	Pro rata
Engineer	€174.42	€4.36	€175.59	€4.39	€176.75	€4.42	Pro rata
Engine Driver	€169.17	€4.23	€170.34	€4.26	€171.50	€4.29	Pro rata
Coxswain	€169.76	€4.24	€170.93	€4.27	€172.09	€4.30	Pro rata
Boatswain/Mate	€167.43	€4.19	€168.60	€4.22	€169.76	€4.24	Pro rata
Seaman/Deckhand	€165.10	€4.13	€166.27	€4.16	€167.43	€4.19	Pro rata
Watchman	€164.52	€3.43	€165.69	€3.45	€166.85	€3.48	Pro rata on 48 hrs

MINIMUM WEEKLY WAGES FOR 2014

	16 years (weekly)	Hourly rate	17 years (weekly)	Hourly rate	18 years and over (weekly)	Hourly rate	Watchmen outdoors (weekly)	Watchmen indoors (weekly)	Part-Time Rates
National Minimum (in absence of an applicable WRO)	€156.06	€3.90	€158.90	€3.97	€165.68	€4.14	€165.68	€165.68	Pro rata
TRAVEL AND INSURANCE									

INDUSTRIAL EMPLOYEES	Weekly	Hourly	
at age 18 or over	€165.68	€4.14	Pro rata
at age 17	€161.02	€4.03	Pro rata
at age 16	€158.69	€3.97	Pro rata

Watchmen	Weekly	Hourly	
at age 18 or over	€165.68	€3.45	pro rata on 48 hours
at age 17	€161.02	€3.35	pro rata on 48 hours
at age 16	€158.69	€3.31	pro rata on 48 hours

NON - INDUSTRIAL EMPLOYEES	Weekly	Hourly	
During the first year of employment in the establishment	€165.68	€4.14	Pro rata
During the second year of employment in the establishment	€168.01	€4.20	Pro rata
During the third year of employment in the establishment	€170.34	€4.26	Pro rata
During the fourth year of employment in the establishment	€175.00	€4.38	Pro rata

MINIMUM WEEKLY WAGES FOR 2014

	16 years (weekly)	Hourly rate	17 years (weekly)	Hourly rate	18 years and over (weekly)	Hourly rate	Watchmen outdoors (weekly)	Watchmen indoors (weekly)	Part-Time Rates
National Minimum (in absence of an applicable WRO)	€156.06	€3.90	€158.90	€3.97	€165.68	€4.14	€165.68	€165.68	Pro rata